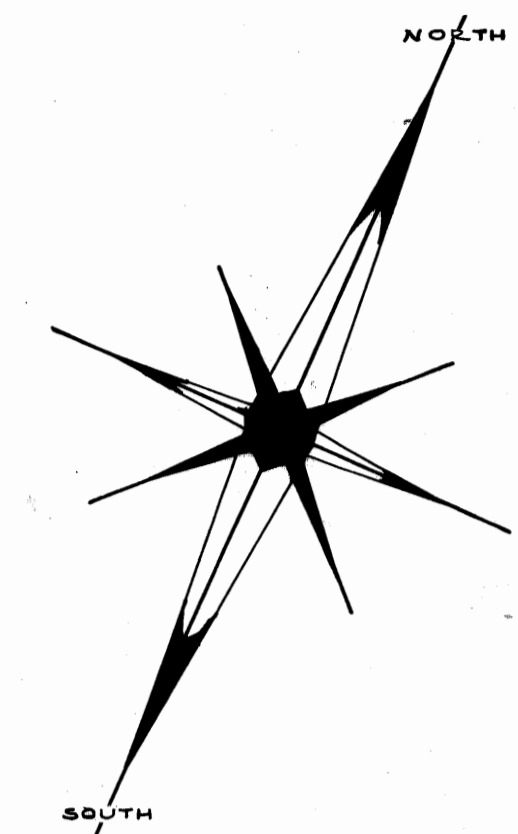


BAY SHORE VILLAGE

BEING LOTS 31 AND 38 OF "PLAT OF SUBDIVISION OF LOTS 13 AND 14 OF THE HANSON GRANT"
PLAT BOOK I, PAGE 89, PUBLIC RECORDS OF PALM BEACH COUNTY, NOW MARTIN COUNTY, FLORIDA

SCALE 1"=100'



I HEREBY CERTIFY THAT I HAVE EXAMINED THE ATTACHED PLAT AND FIND THAT IT COMPLIES IN FORM WITH CHAPTER 177 FLORIDA STATUTES AND WAS FILED FOR RECORD THIS 10 DAY OF Oct A.D. 1968, IN PLAT BOOK 4, PAGE 24, IN THE OFFICE OF THE CLERK OF THE CIRCUIT COURT AT STUART, MARTIN COUNTY, FLORIDA.

CLERK OF THE CIRCUIT COURT
Dorothy Preece
FILE 131773 By: Ashbriff

FILED FOR RECORD
MARTIN COUNTY, FLA.
68 OCT 10 PM 4: 4
DOROTHY PREECE
CLERK OF CIRCUIT COURT
D.P.

APPROVAL

STATE OF FLORIDA
COUNTY OF MARTIN

IT IS HEREBY CERTIFIED THAT THIS PLAT HAS BEEN OFFICIALLY APPROVED FOR RECORD BY THE BOARD OF COUNTY COMMISSIONERS OF THE COUNTY OF MARTIN, FLORIDA, THIS 13 DAY OF August A.D. 1968

APPROVED:

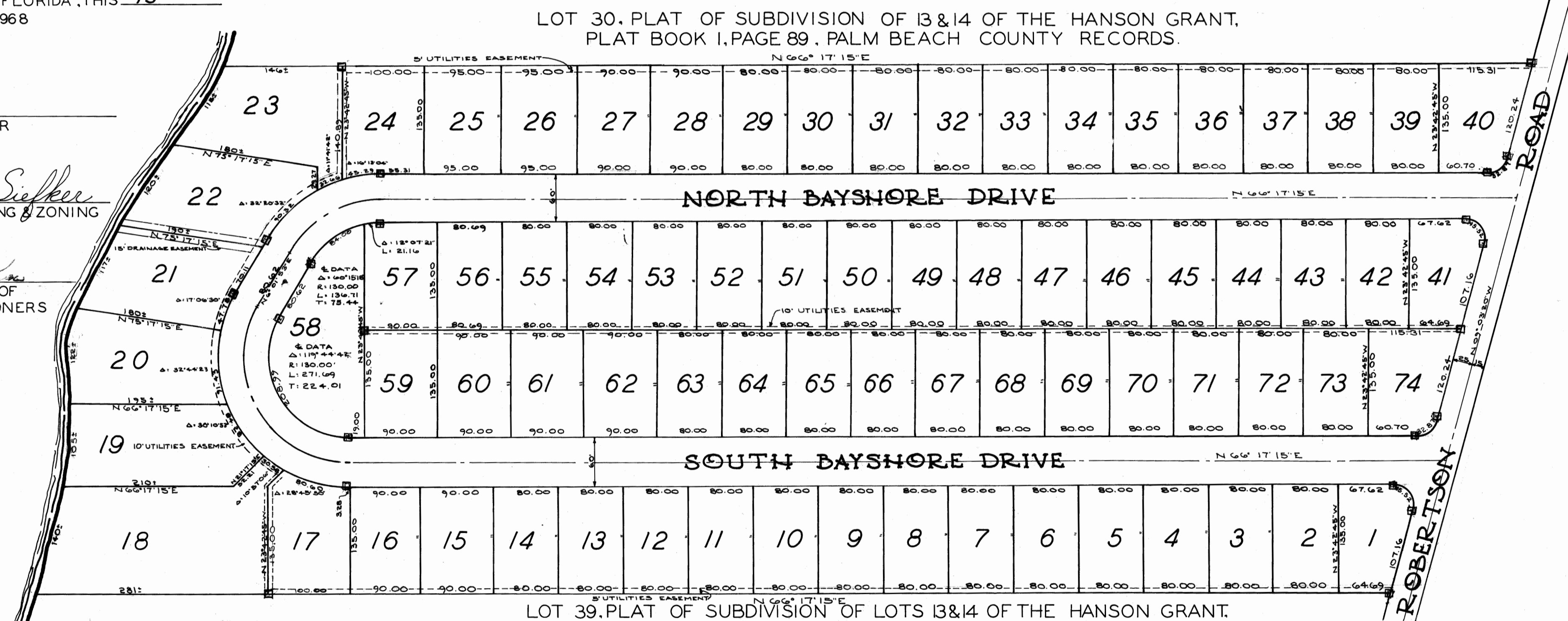
J. J. Slides
COUNTY ENGINEER

Paul E. Sisker
CHAIRMAN PLANNING & ZONING COMMISSION

Chairman Board of
COUNTY COMMISSIONERS

MANATEE

POCKET



LOT 30, PLAT OF SUBDIVISION OF 13 & 14 OF THE HANSON GRANT,
PLAT BOOK I, PAGE 89, PALM BEACH COUNTY RECORDS.

LOT 39, PLAT OF SUBDIVISION OF LOTS 13 & 14 OF THE HANSON GRANT,
PLAT BOOK I, PAGE 89, PALM BEACH COUNTY RECORDS.

CERTIFICATION

STATE OF FLORIDA
COUNTY OF MARTIN

I HEREBY CERTIFY THAT THE PLAT SHOWN HEREON IS A TRUE AND CORRECT REPRESENTATION OF A SURVEY MADE UNDER MY DIRECTION AND THAT SAID SURVEY IS ACCURATE TO THE BEST OF MY KNOWLEDGE AND BELIEF, AND THAT PERMANENT REFERENCE MONUMENTS HAVE BEEN PLACED AS REQUIRED BY LAW.

Lee Brock
LEE BROCK - LAND SURVEYOR
FLORIDA CERTIFICATE NO. 2157

SUBSCRIBED AND SWORN TO BEFORE ME THIS 15TH DAY OF August A.D. 1968, AT STUART, FLORIDA

MY COMMISSION EXPIRES
Nov. 15, 1970

John D. Burgess
NOTARY

SYMBOL FOR P.R.M. - □

DEDICATION

STATE OF NEW YORK
COUNTY OF MONTGOMERY

KNOW ALL MEN BY THESE PRESENTS THAT MOHAWK VALLEY CONCRETE CO. INC. A NEW YORK CORPORATION, LICENSED TO DO BUSINESS IN THE STATE OF FLORIDA, OWNER IN FEE SIMPLE OF THE LANDS SUBDIVIDED AS SHOWN HEREON HAS CAUSED SAID LANDS TO BE SURVEYED AND PLATTED AS SHOWN HEREON AND DOES HEREBY DEDICATE TO THE PERPETUAL USE OF THE PUBLIC THE ROADS SHOWN HEREON.

IN WITNESS WHEREOF MOHAWK VALLEY CONCRETE CO. INC. HAS CAUSED THESE PRESENTS TO BE SIGNED BY ITS PRESIDENT AND ITS CORPORATE SEAL AFFIXED AND ATTESTED BY ITS SECRETARY THIS 27 DAY OF JULY A.D. 1968.

Paul C. Plank
WITNESS

Harry A. Marney
WITNESS

Richard J. Burgess
RICHARD J. BURGESS - PRESIDENT

ATTEST:

Ethel Burgess
ETHEL BURGESS - SECRETARY

ACKNOWLEDGEMENT

STATE OF NEW YORK
COUNTY OF MONTGOMERY

BEFORE ME THIS DAY PERSONALLY APPEARED RICHARD J. BURGESS AND ETHEL BURGESS, PRESIDENT AND SECRETARY RESPECTIVELY OF MOHAWK VALLEY CONCRETE CO. INC., WELL KNOWN TO ME TO BE PERSONS EXECUTING THE FOREGOING INSTRUMENT OF DEDICATION AS SHOWN HEREON AND WHO ACKNOWLEDGED TO AND BEFORE ME THAT THEY EXECUTED THE SAME AS STATED THEREIN.

WITNESS MY HAND AND OFFICIAL SEAL AT CANAJOHARIE, NEW YORK, THIS 27 DAY OF JULY A.D. 1968.

Clarence A. Corbett
NOTARY

MY COMMISSION EXPIRES 3/30/70

STAFFORD & BROCK
ENGINEERING & SURVEYING
38 EAST OCEAN BLVD.
STUART, FLORIDA